

## Courses

### Mechanic Course

Study to become a Certified National Automobile Mechanic (Grade-2)

Total  
**2**-year course  
Capacity  
**120** people

### Advanced Mechanic Course

Study to become a Certified National Automobile Mechanic (Grade-1)

Total  
**4**-year course  
Capacity  
**80** people

### Motor Sport Course

Gain an in-depth understanding of automobiles and automotive technology while driving a circuit.

Advanced Course  
**1**-year course  
Capacity  
**20** people

## Fees Automobile Maintenance Course (2-Year Course)

Item (Payment schedule)	Admission process (enrollment fee)	The 1st term (tuition fees, etc.)	The 2nd term (tuition fees, etc.)	Subtotal
	After passing the entrance exam	March	October	
Payment for the 1st year	240,000 yen	785,000 yen	375,000 yen	<b>1,400,000 yen</b>
Payment for the 2nd year	-	705,000 yen	375,000 yen	<b>1,080,000 yen</b>

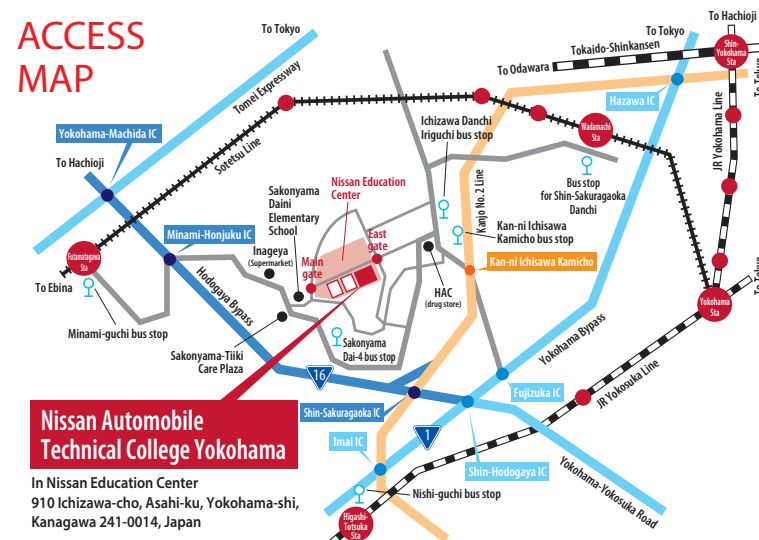
\*For information on fees for other courses, see our website or call us toll free at the number on the bottom of the page.

## Special scholarship for international students

Eligibility: Anyone who has passed JLPT N2  
Amount: 250,000 yen

- Applicants who pass N2 and apply before February are also eligible. Be sure to submit a copy of your N2 certificate.
- The scholarship will be paid after admission to the college. Contact us for further details.

## ACCESS MAP



### Coming by train or bus

- **From South Exit of Futamatagawa Station (Sotetsu Line)**  
Take the bus bound for Higashi-Totsuka Eki Nishi-guchi or the Sakonyama Dai-5/Dai-6 and get off at the Sakonyama Dai-4 bus stop (takes about 20 minutes). A 5-minute walk from there.
- **From Wada-machi Station (Sotetsu Line)**  
Take the bus bound for Shin-sakuragaoka Danchi and get off at the Ichizawa Danchi Iriguchi bus stop (takes about 15 minutes). A 5-minute walk from there.
- **From West Exit of Higashi-Totsuka Station on JR Yokosuka Line**  
Take the bus bound for Futamatagawa Eki Minami-guchi or Ichizawa Shougakko and get off at the Kan-ni Ichisawa Kamicho bus stop (takes about 10 minutes). A 7-minute walk from there.

### Coming by car

- Take the Tomei Expressway and exit at the Hodogaya Bypass/Minami-Honjuku IC. Drive in the direction of Sakonyama Danchi. It takes about 10 minutes.
- Take the Yokohama-Yokosuka Road and exit at the Shin-Sakuragaoka IC. Drive in the direction of Ichizawa Danchi. It takes about 10 minutes.
- Take the Yokohama Bypass and exit at the Fujizuka IC. Drive in the direction of Ichizawa Danchi. It takes about 10 minutes.



For international students

# NISSAN AUTOMOBILE TECHNICAL COLLEGE

Realize your dream of being an automotive mechanic at Nissan College!



Want to know more about Nissan Automobile Technical College?



Search for  
"Nissan Automobile Technical College"  
URL: <https://www.nissan-gakuen.ac.jp>



Use the QR code  
for smartphones →  
<https://www.nissan-gakuen.ac.jp/sp/>



Find Nissan Automobile Technical College Yokohama on **LINE@!**



**Get a LINE Shop card!**  
Gain points by attending  
our open campus!  
Be in to win a Nissan Auto College original gift!



Certified as a college offering a Professional Post-Secondary Course by the Ministry of Education, Culture, Sports, Science and Technology

**Nissan Automobile Technical College Yokohama** **0120-230-814**

910 Ichizawa-cho, Asahi-ku, Yokohama-shi, Kanagawa 241-0014, Japan E-mail: [yokohama@nissan-gakuen.ac.jp](mailto:yokohama@nissan-gakuen.ac.jp)



To become an automotive mechanic, you must gain an Automotive Mechanic qualification.

If you get a Grade-2 national qualification, you will be able to work in Japan!

Become a member of the Nissan Dealer Group!

**Nissan's network will help you to find employment anywhere in the country.**

Number of Nissan Dealer Group companies in all regions of Japan

**123**

Number of Nissan Dealerships in Japan

**Approx. 2,100**

Number of Nissan Dealer Group employees in Japan

**Approx. 39,000**

**Work performed by automotive mechanics**

Mainly diagnosis, inspection, servicing, disassembly, assembly, repairs and maintenance included. Most automotive mechanics work in repair shops and dealerships. Today, more and more non-Japanese automotive mechanics are being employed in Japan.

Nissan is driving the cars of tomorrow to achieve a safe and sustainable society with zero CO2 emissions and zero traffic fatalities.

**NISSAN INTELLIGENT MOBILITY**

# The Nissan Group provides 3 pillars of support for peace of mind.

**1 Pre-admission support**

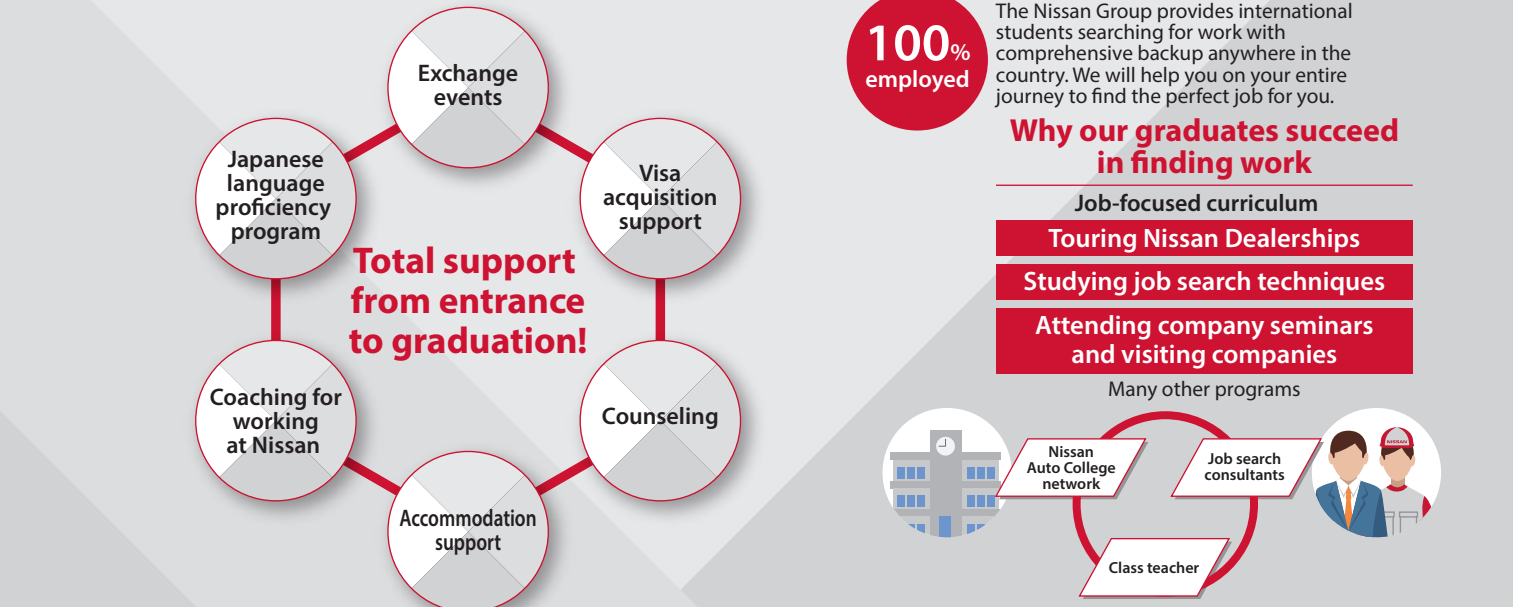
You can talk with us about entrance exams, academic requirements, tuition fees—anything at all! We also offer a special pre-admission seminar for successful applicants to prepare you for college.

Talk with us about anything!

Pre-admission seminar

**2 Support at college**

Leave everything to our trustworthy staff assigned to look after international students!



Fun exchange events

Japanese lessons

We will help you on your entire journey of finding work!

# Many international students are working hard to realize their dreams!

**Messages from students**

1. Why I chose Nissan Auto College 2. Why I'm glad I'm here 3. My future dream 4. What I am working on right now 5. Message

**Myo Hlaing Win (Myanmar)**

- I want to help the technologies I learn at Nissan to become widespread in Myanmar.
- I like that the teachers are very kind and friendly, and I can ask them anything.
- I want to build a factory in Myanmar.
- I'm working hard on my daily classes. I love cars, so my course is lots of fun.
- There is a Nissan Dealer Group company in Myanmar, so your future is secure.

**Shu Cho (China)**

- I wanted to study about cars and work in Japan.
- I'm happy to get a chance to study many different things and every day is full.
- I want to open my own shop in the future.
- I'm studying for my Nissan and national qualifications.
- You should work hard on your Japanese and gain JLPT N2 and N1 qualifications.

**Doan Hiep Bao Toan (Vietnam)**

- The senior students and teachers at the college taught a really good class when I attended the open campus.
- I'm glad that I got the national qualification and that I already know I have a job at a Nissan dealership.
- I want to open my own repair shop.
- Observing deadlines for assignments and actively asking the teacher if there is something that I don't understand.
- Let's study together at Nissan Auto College to gain a national qualification!

**Rawat Jit Bahadur (Nepal)**

- I love Nissan cars and this college is well equipped with excellent facilities.
- The classes focus on hands-on teaching, so I'm gaining lots of practical skills.
- I want to have a job related to cars in Japan.
- I'm working hard on my kanji (Japanese characters) so that I can keep up in class.
- There are many really caring teachers who make it easy for you to study.

**Messages from graduates**

International students who are working at the moment

1. Why I'm glad I went to the college 2. What I worked hard on and achieved at the college 3. My main job now 4. Message

**Nguyen Hoan Anh (Vietnam)**




Automotive mechanic  
Member of the Service Department at a Nissan Dealership

- The teachers always explained things in a way that was easy to understand, so I could study with no problem.
- I studied automobiles hard every day, and, thanks to that and to my teachers, I could get my Grade-2 Certified National Automobile Mechanic license and find a job.
- My main job right now is servicing and inspecting cars, and doing warranty and recall work. In the future, I want to gain further qualifications and work more directly with customers.
- You should continue studying Japanese while also taking your classes at the college right up until you find work.

**Kim Tae Hyon (South Korea)**

Automotive mechanic  
Member of the Service Department at a Nissan Dealership

- There were lots of practical lessons, so for someone like me who loves Nissan cars, every day was really fun.
- I wanted to become proficient in Japanese, so I took every opportunity I could to talk with Japanese people.
- I was lucky enough to be given the job of performing inspections right after I entered the company. In the future, I want to gain various other qualifications and be more helpful to customers.
- If you want to work in Japan, you must make every effort to study Japanese. If you know about cars and can communicate in Japanese, everyone will know they can rely on you.

Sample day at college										
Early morning		Morning				Afternoon			Evening	
Arrive at college	HR	1R	Break	2R	Lunch break	3R	Break	4R	HR	<div>· Part time job</div> <div>· Obtain driving license</div> <div>· Shopping</div> <div>and more</div>
Arrive in plenty of time ♪	Notices	<div>Classroom lesson</div> <div>Engine construction</div>				<div>Practical lesson</div> <div>Engine maintenance</div>			Notices	Enjoy your free time ♪

\*The timetable will differ depending on the college.